

TASTE THE WORLD SAVOR ASIA



Tue Sat
29-02
MAY JUNE
2018

IMPACT
Exhibition and
Convention Center
Bangkok, Thailand

*Where Else would you go?
When THAIFEX is the ONLY Fair
that Has Everything for Your
Food and Beverage-Related Business.*



Chantira Jimreivat Vivatrat
Director-General, Department of International Trade Promotion

also commented on how THAIFEX - World of Food Asia opens up the global market to the country's players in the industry. "Thailand is the largest food exporter in Southeast Asia, with the country's food exports forecast to reach US\$27.4b this year, according to Deputy Prime Minister Somkid Jatusripitak. We are always striving to boost the potential of Thai players so that they become competent and competitive to help them sustainably and efficiently operate in global markets, and THAIFEX - World of Food Asia is the optimal platform for this."

Kalin Sarasin
Chairman of the Thai Chamber of Commerce and Board of Trade of Thailand

"Indeed, THAIFEX - World of Food Asia boosts the competitiveness of Thailand by bringing global and local players onto a single platform and showcase their world-class products and services in F&B", said Kalin Sarasin, Chairman of the Thai Chamber of Commerce and Board of Trade of Thailand, and Chairman of the Tourism Authority of Thailand Board of Directors. "This trade show helps place Thai F&B entrepreneurs and small medium enterprises on the world map of quality, expertise, and innovation, reinforcing Thailand's position as 'Kitchen of the World'."



Mathias Kuepper
Managing Director at Koelnmesse Pte Ltd.

"THAIFEX - World of Food Asia is the show that the F&B industry must be at if they are looking for trade opportunities in the ASEAN and Indochina regions. The inclusion of new elements over the years are indicative of the fast-changing environment, and it is crucial that we continue to strengthen our offerings to deliver the best experience for business networking."
"It is three months prior to the event, and we are already recording very positive registration figures as well as sign-ups for the hosted buyer program. Numbers speak for themselves, and these are a testament to the event's ability to provide a highly valuable platform for visitors and exhibitors to congregate."

THAIFEX TRADE SHOWS

IMPACT HALL

1-8

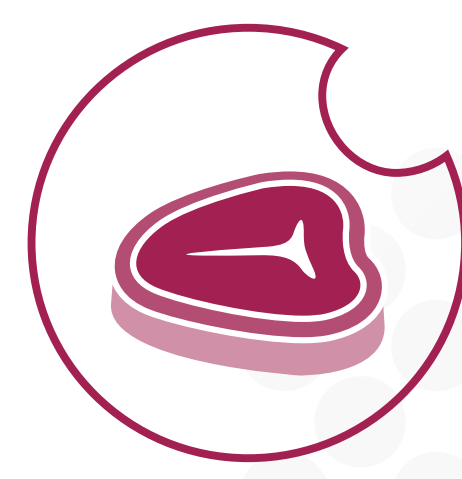


FINE FOOD

- Delicatessen, gourmet, and basic food and drinks
- International pavilions
- Thai importers and exporters

IMPACT HALL

8



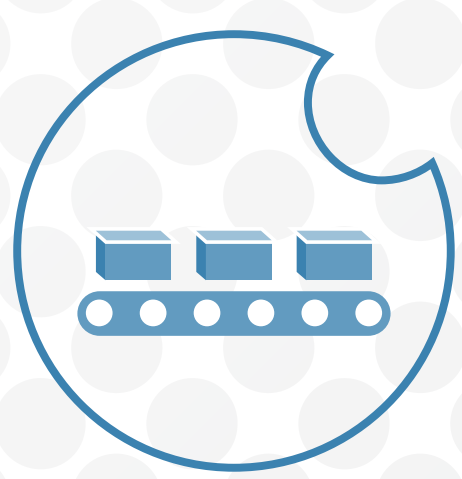
MEAT

CHALLENGER

1



FOOD SERVICE



FOOD TECHNOLOGY



COFFEE & TEA

CHALLENGER

2



DRINKS



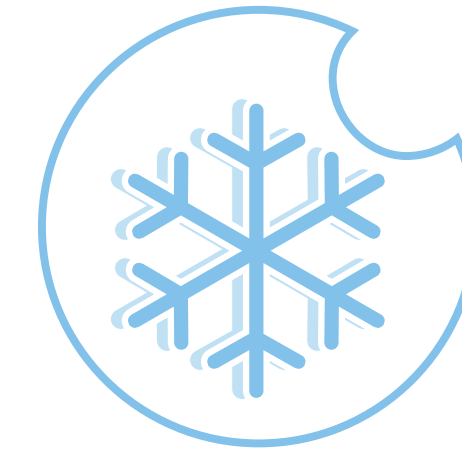
SWEETS & CONFECTIONERY



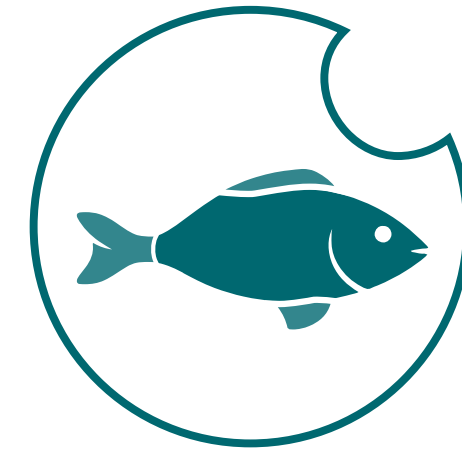
FROZEN FOOD

CHALLENGER

3



FROZEN FOOD



SEAFOOD



RICE



FRUITS & VEGETABLES

FACILITIES

FT **FAST TRACK**
for Pre-registered Visitors at IMPACT Hall 5, 6 & 8

OR **ONSITE REGISTRATION**
Visitor Registration at IMPACT Hall 1 & 2

GC **GUEST CLUB**
IMPACT Amber 2 and Challenger 1 Foyer



**Pre-register
online now!**

Pre-registration closes on
18 May 2018!

www.thaifexworldoffoodasia.com

JOINTLY ORGANIZED BY



ENDORSED BY

